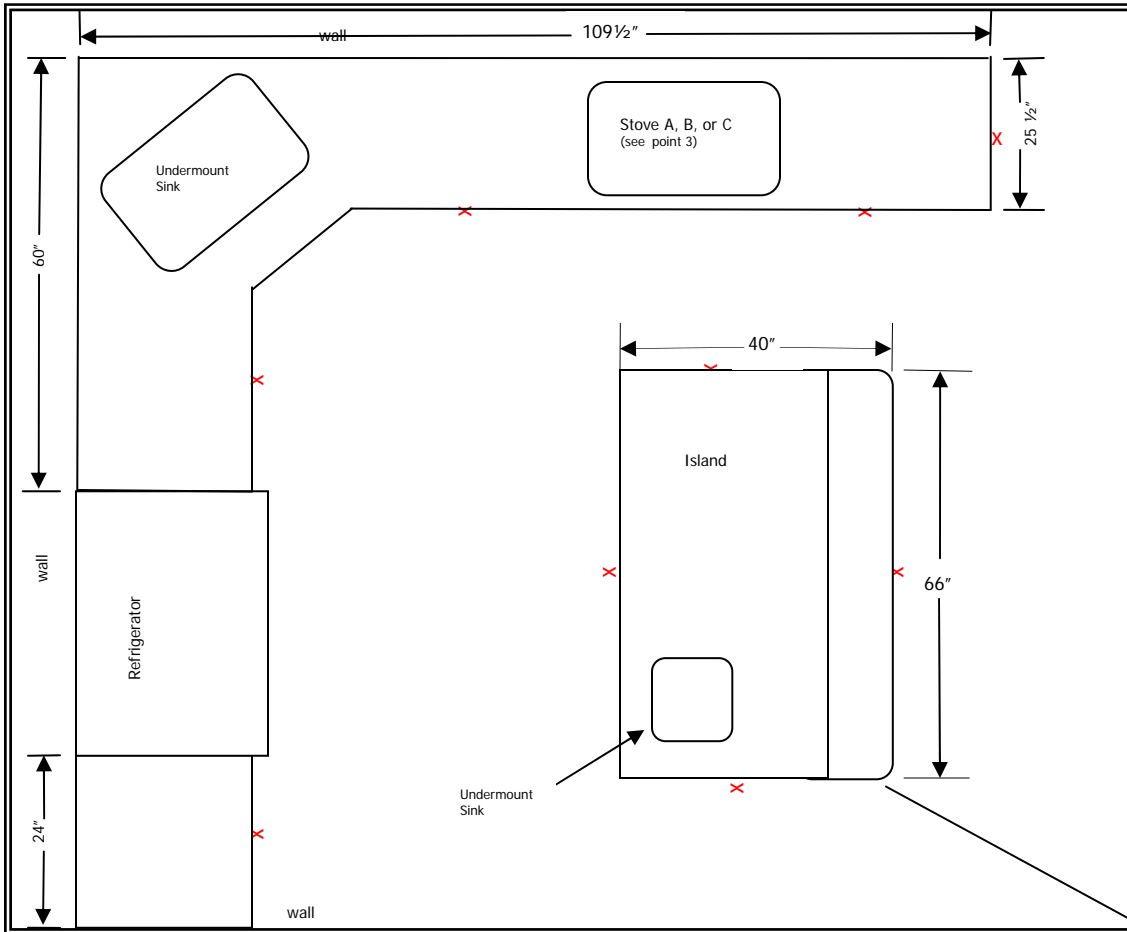
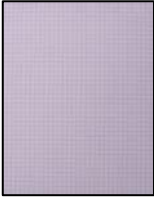


Countertop Project – Sketch

Use this worksheet to draw a simple sketch of your kitchen (or bathroom) countertops. Measure your countertop in inches, using a regular tape measure. Note where sink(s), appliances, and walls are located. This example of a typical sketch will assist you.

Before you begin, you will need the following items: graph paper (provided for you on page 2 of this document), pencil or pen, and a tape measure.



Sketching your Countertops

1. Sketch out the basic shape of your kitchen and layout and label the walls.
2. Mark sink location and indicate type of sink (drop-in or undermount).
3. Mark stove location and indicate type of stove: (A – Slide-in Cooktop; B – Drop-in Cooktop; C – Range).
4. Mark with (x) all exposed edges that will need to be finished.
5. Indicate any area on the plan that is not granite, such as wall ovens, pantry area, refrigerator area, etc.

Islands

Note: Every rounded piece (including curves) should be measured as if it were rectangular in shape. Measure the furthest distance possible from the rounded side to the opposite side.

Measuring your Countertops

Existing Countertop

Step A – Measuring Length: measure along the **wall** from one edge to the opposite edge.

Step B – Measuring Width: measure from the back wall to the **finished front** edge.

* If your existing countertop has a backsplash, be sure to factor in the thickness.

New Cabinetry

Step A – Measuring Length – measure along the wall from one edge to the opposite edge.

Step B – Measuring Width – measure from the back wall to the front of the cabinet.

